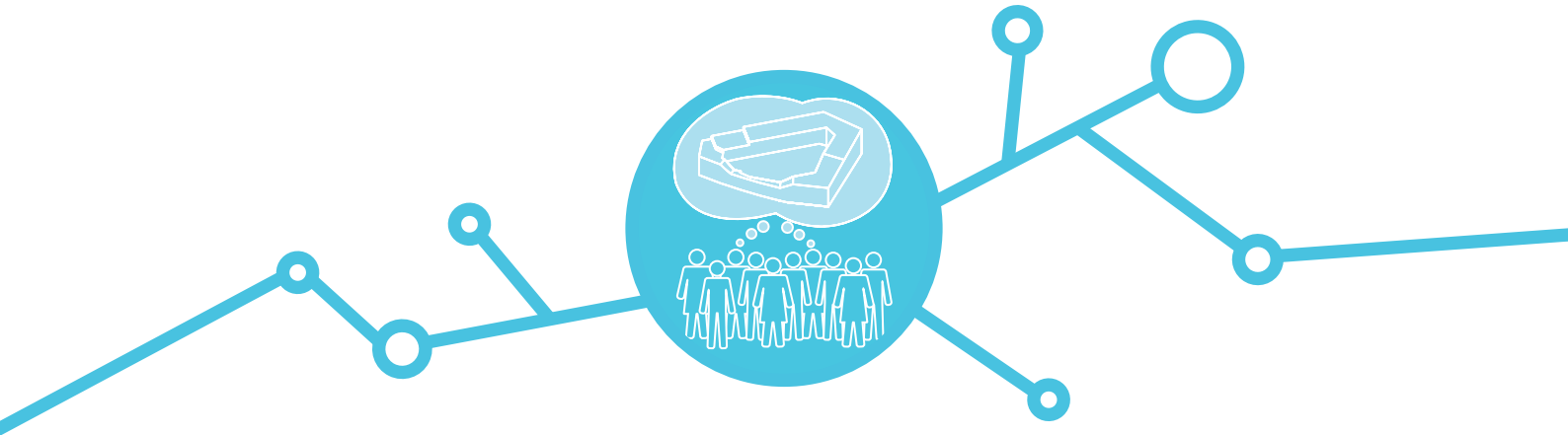


CONNECTED LIVING

KALKBREITE COOPERATIVE
ZURICH, SWITZERLAND



CATEGORIES

S Community spaces where diverse people meet

PRESENTER

Jonathan Kischkel, Member of the Board

DESCRIPTION

We are a housing cooperative in the heart of Zurich, Switzerland, aiming to overcome the negative effects of gentrification. We use participation tools at every possible level to create diverse, dense, and sustainable neighbourhoods. We choose residents deliberately to represent a diverse mix of backgrounds and promote interaction in attractive shared spaces.

MOTIVATION

To make the housing model of cooperatives accessible to an interested public, and to share the benefits of using participation processes for project development.

PROBLEM ADDRESSED

Urban centres are becoming increasingly expensive, rents are rising, and life is being forced out into the outer districts of cities. Thus, segregation increases and solutions are needed to counter the omnipresent threat of gentrification. Furthermore, by including a variety of common spaces that can be programmed and reprogrammed by the actual residents we manage to overcome the anonymity of many of today's urban settlements.

MORE DETAILS

The Kalkbreite cooperative aims to acquire land to develop housing that enables vibrant communities. We therefore strive to fulfil the following principles:

- Constructing and renting out inexpensive residential and commercial spaces
- Connecting living, working, and culture
- Promoting social mixing and community facilities
- Promoting sustainable development according to the objectives of the 2000-watt society

The cooperative emerged in 2006/2007 from a local residents' initiative. Today, our urban and needs-based apartments, offices, shops, restaurants, bars, and even a cinema have become a well-received hotspot that has brought people together. The Kalkbreite cooperative is testing new types of housing, such as cluster apartments, large residential communities, living in old age and more. The bottom-up concept that was present from the very beginning is still integrated in our everyday business, as we strive to develop and justify new ideas, formal cooperative guidelines, and the general direction of the cooperative with as many members and non-members as possible.

OUTCOMES

Since 2014, the Kalkbreite cooperative has been operating a property in the heart of Zurich with 95 apartments and 160 residents. To see how a well-executed, individual, and non-profit initiative can make a whole neighbourhood flourish is a great reward for the huge effort that was involved in setting it up. Our second property, the Zollhaus, set to open in 2020, aims to further explore our ideas of how housing can be both super-dense and highly individualized, while still sharing key parts of urban living with the wider community. Our method of developing projects received an overwhelming amount of attention both nationally and internationally. The number of cooperative members supporting our cause is steadily growing and just recently reached 2000.

LESSONS LEARNED

Our experience has taught us that bottom-up instead of top-down approaches are more sustainable, more human, and more successful. However, by including so many people in the planning process, it was also unavoidable to create expectations that could never be fulfilled. Managing these expectations (and sometimes the disappointments that result) therefore needs to also be a main part of the process.

LINK

www.kalkbreite.net