

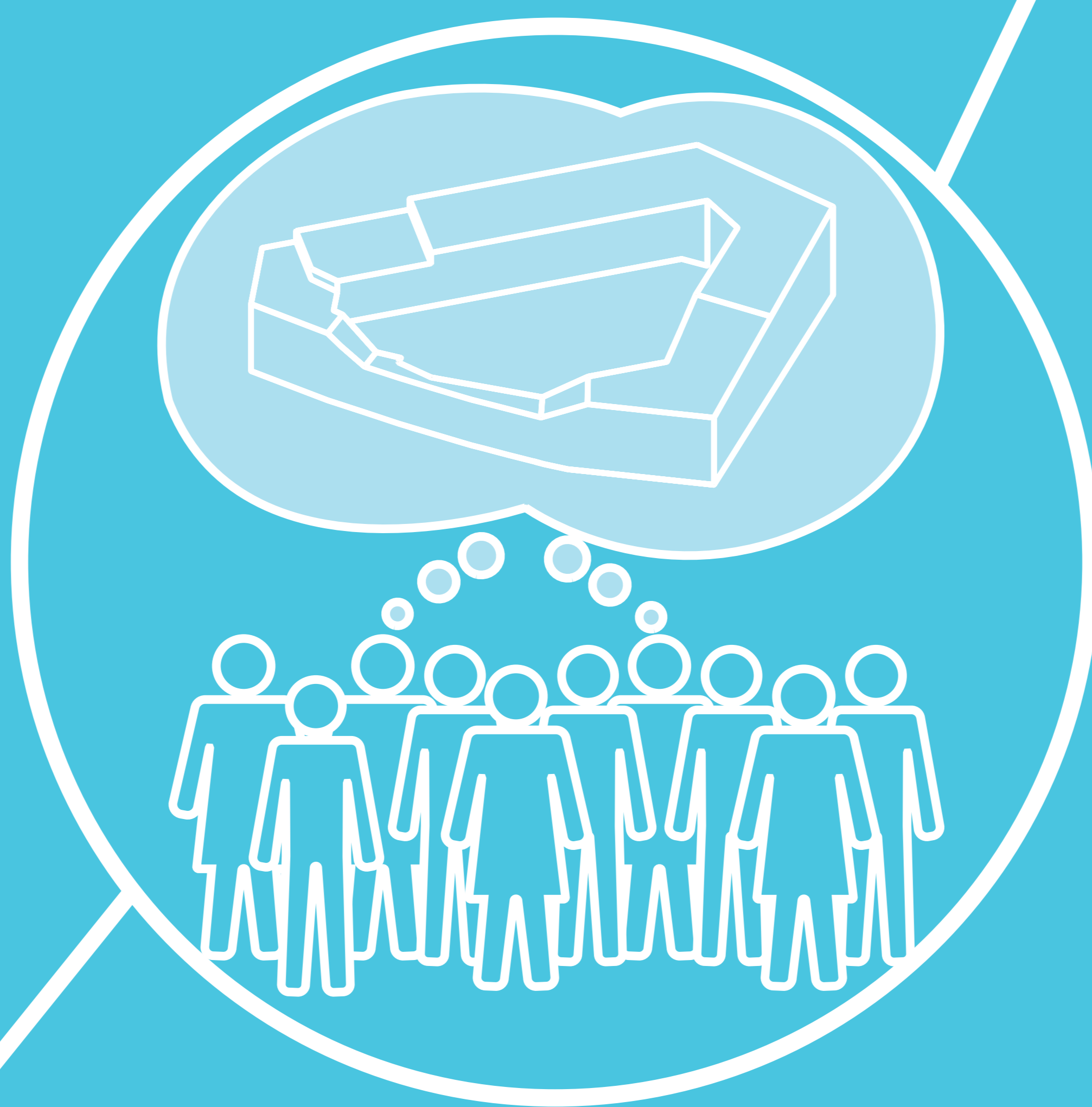
CONNECTED LIVING



KALKBREITE COOPERATIVE ZURICH, SWITZERLAND

SOCIAL SEGREGATION

In many urban centres housing is becoming increasingly expensive, **rents are rising**, and especially people on lower incomes are being forced out into the outer districts. Even within the same district people live in anonymity and **rarely meet each other**.



MANAGING EXPECTATIONS

Using participatory methods and including many people in the planning process inevitably led to the creation of **expectations** that could **never be fulfilled**. Managing these expectations (and sometimes the disappointments that result) therefore likewise needs to be a crucial part of the process.



MIXED HOUSING WITH COMMUNITY FACILITIES

The Kalkbreite cooperative runs a property with a variety of businesses and 95 affordable apartments in the heart of Zurich. Its 160 residents are chosen to represent a **mix of different ages, genders, income levels and professional and educational backgrounds, as well as nationalities**. Attractive common spaces promote interaction.



S

Community spaces where diverse people meet

Picture credits: Genossenschaft Kalkbreite, Volker Schopp